

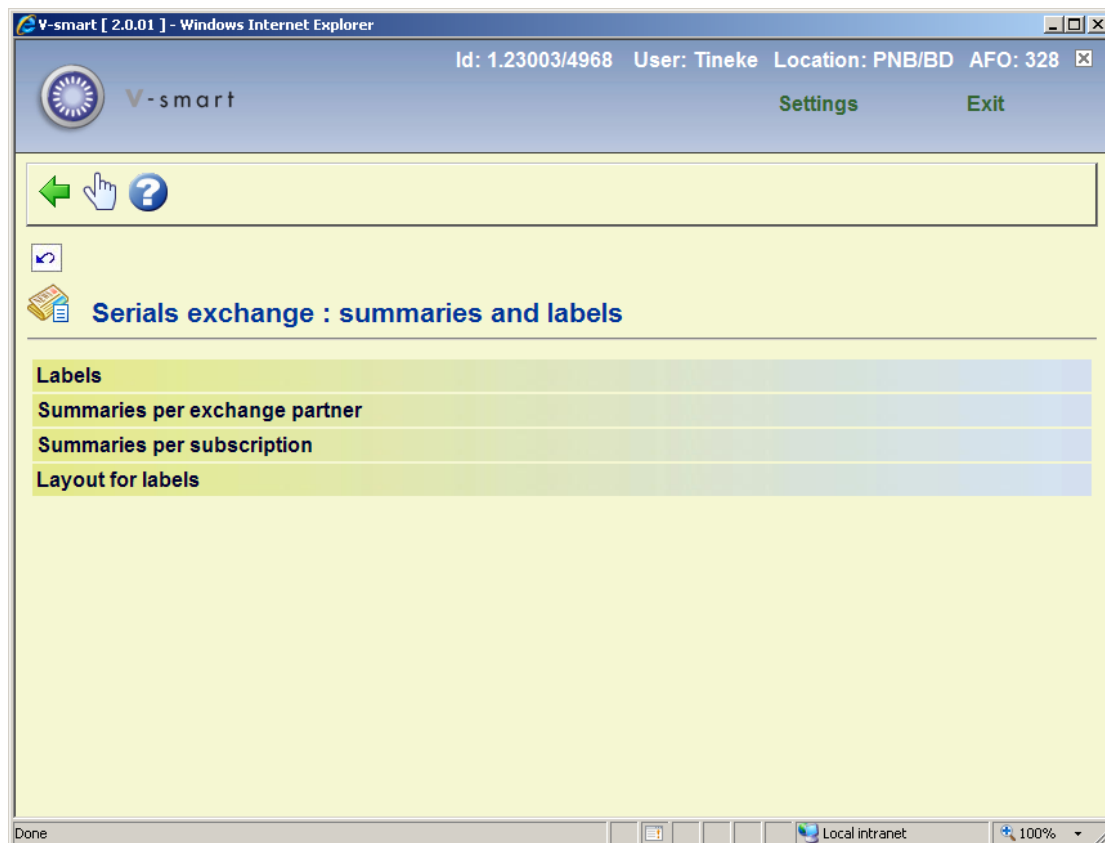
AFO 328 Serial exchange lists

328.1 Introduction

In a serials exchange agreement, one partner institute agrees to send your library one or more publications in exchange for your library sending it one or more publications. Each exchange partner is added as a supplier in AFO 241. When you link exchange partners (suppliers) to subscription records in AFO321 (as supplier to which claims are sent) these subscriptions will appear in AFO 327 (option To be received).

One additional partner record, representing your library, is also added to AFO 241. The subscriptions of this 'supplier will also appear in AFO 327 (option To be sent).

After starting this AFO a menu is displayed:



The options are described in the next paragraphs.

328.2 Labels

With this option you can print labels for sending your own titles to the relevant exchange partners.

After selecting this option, the standard form for generating output is displayed.

After selecting an output method, the labels with details of each supplier are printed. The first line lists the supplier code, below that the acronym(s) of subscriptions to be sent followed by the name and address details:



```
f2002.txt - Notepad
File Edit Format View Help

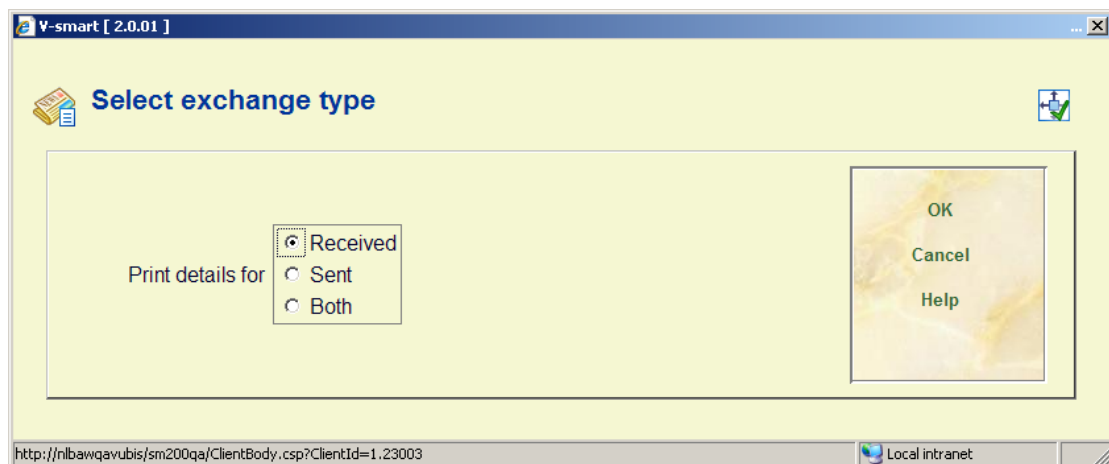
HEI
MOTEX BIB
Heinen
Kerkstraat 27
5211 KD 's-Hertogenbosch
NETHERLANDS

ES
MOTEX BIB
Exchange supplier
Straatweg 1
1234 AZ Nlstad
NETHERLANDS

wvCLIT
MOTEX BIB
Ministerie wvc, Hoofdafd. Doc. en Bibliotheek, Afd. Literatuurstudie
Postbus 5406
2280 HK Rijswijk
NETHERLANDS
```

328.3 Summaries per exchange partner

This option this option is used to generate a list of subscriptions for each exchange partner. After selecting this option you can make a choice:



The system will allow you to select one of the following:

- Partners from whom you receive material
- Partners to whom you send material
- All partners (send and receive)

After clicking **OK** the standard form for generating output is displayed. The result list is sorted by supplier number and displays for each supplier which titles you receive and which titles you send.

```

Exchange supplier - subscriptions received:
Aeronautical journal : the "flying" experience           AER
Journal of issue prediction                             JIP
Journal of Medical Procedures                           JMPR

Exchange supplier - Subscriptions sent:
Motor experience                                         MOTEX
Tijdschrift voor bibliotheken                           BIB

Ministerie wvc, Hoofdafd. Doc. en Bibliotheek, Afd. Literatuurstudie - Subscriptions
received:
Tineke's brand new test serial

Ministerie wvc, Hoofdafd. Doc. en Bibliotheek, Afd. Literatuurstudie - Subscriptions
sent:
Motor experience                                         MOTEX
Tijdschrift voor bibliotheken                           BIB

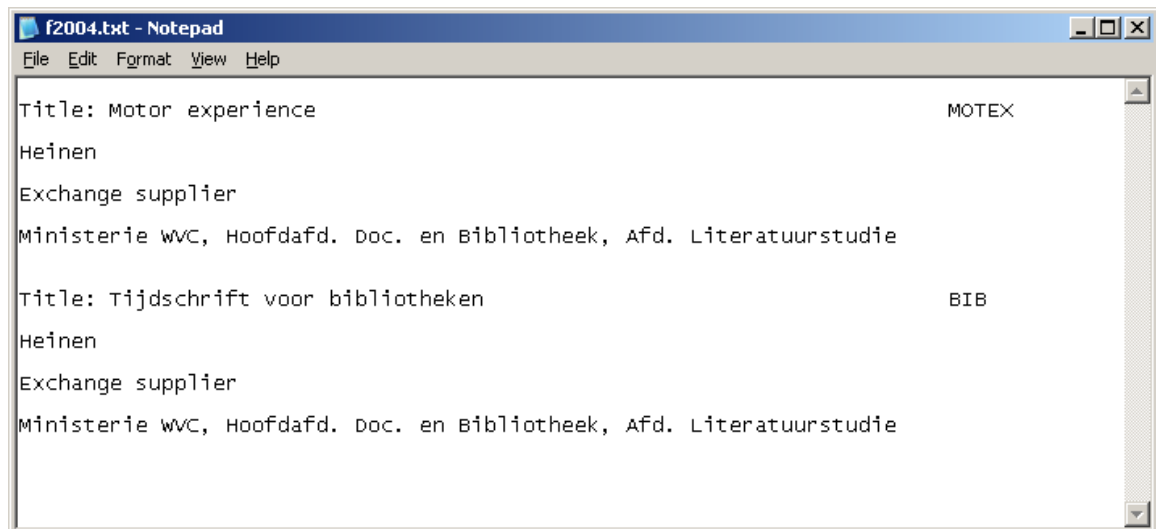
Biblion bv - subscriptions received:
Diététique et médecine

```

328.4 Summaries per subscription

This option is used to generate the list of exchange partners that receive each subscription in the exchange program. After selecting this option the standard form for generating output is displayed.

The title and title acronym of the subscription are printed followed by each exchange partner that receives the subscription (on separate lines). Each title starts on a new page.



328.5 Layout for labels

With this option you determine the size of the labels that are printed with the first option of AFO 328.

After selecting this option an input form is displayed:

V-smart [2.0.01]

Top margin

Length

Left margin

Line (length)

OK
Cancel
Help

http://nlbawqavubis/sm200qa/ClientBody.csp?ClientId=1.23003 Local intranet

Please note the following for **Length**: this must at least be 6 (1 line for supplier code, 1 line for acronyms of subscriptions to be sent and 4 lines for supplier name and address). When you first 'print' the details to word processor or spreadsheet and you want a blank line between the blocks, then you must enter 7 for **Length**.

- **Document control - Change History**

Version	Date	Change description	Author
1.0	November 2008	creation	